

## **ESTIMATING AND ORDERING GUIDE**

APRIL 2009

## NOTES



## Estimating and Ordering a Project

Survey the project and determine the quantity of openings to be covered and the product selection.

Draw a footprint of the building using the Project Layout Worksheet, showing all openings covered and not covered. Number the openings. Check for your companies rule on locating unit #1 (Some Companies use the front door as a starting point. This example is using the far left unit while facing the front of the building.)

Measure the (window) opening or the trapped (T) width x height in inches and show dimensions on the footprint. This example is using a “T” for the trapped condition. Use a symbol for the type of shutter desired. (ie: R for Roll-up, A for accordion, P for panel) Identify operator side, vertical lock locations and stacking requirements.

### Step 1

Use a trapped dimension, if measurable (Finished Shutter size) for figuring finished SF in Step 4.

### Step 2

Use the Accordion and Roll-Up Measuring Sheets to convert wxh window opening sizes to wxh shutter opening sizes.

### Step 3

Use the Accordion and Roll-Up SF Tools to convert shutter opening sizes to finished shutter sizes.

### Step 4

Use finished dimensions to determine total SF of unit. (wxh/144)

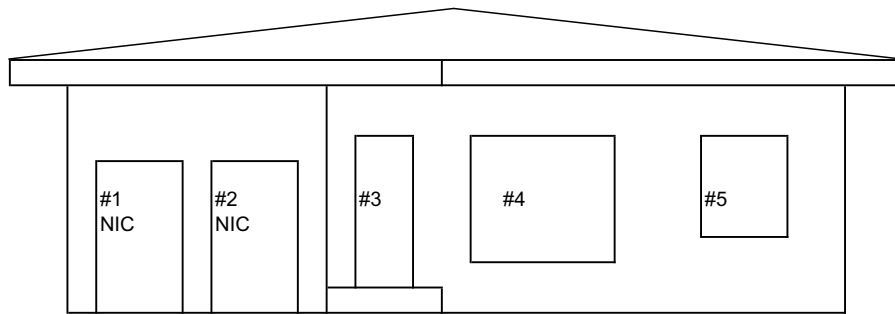
### Step 5

Enter finished shutter sizes (unit total SF) in the Project Order Worksheet to organize the estimate. Use several rows for each accessory to be charged. (ie: build out, tubular motor, assist spring, handle, remote control, etc.)

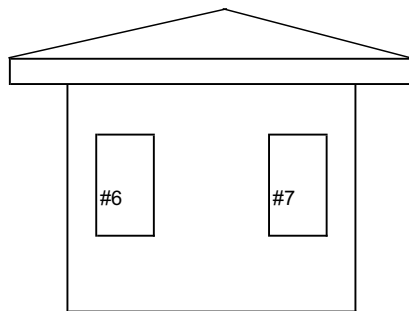
### Ordering

Use Roll-Up, Accordion and Component Order Forms to order materials. List all accessories not included with shutters on the Component Order form. Refer to Roller Star Source Book when preparing orders.

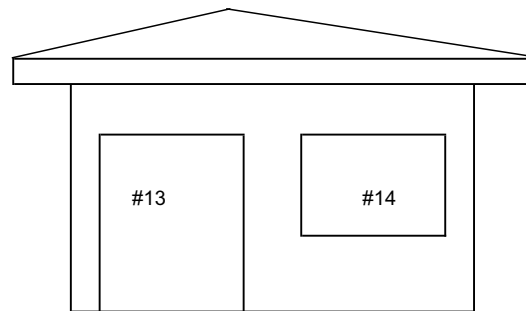
# EXAMPLE HOUSE ELEVATIONS



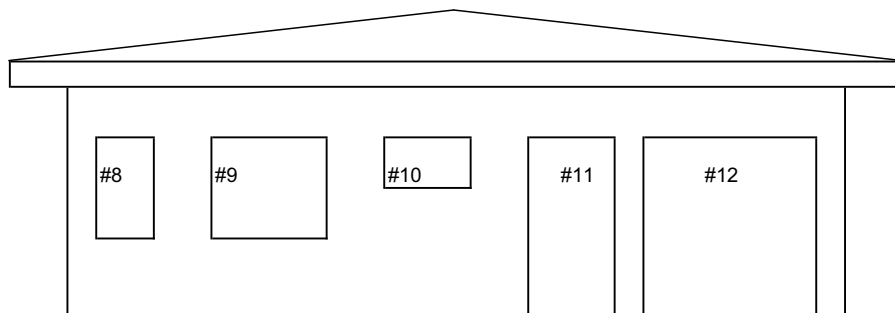
FRONT DOOR (NORTH)



RIGHT SIDE (WEST)



LEFT SIDE (EAST)

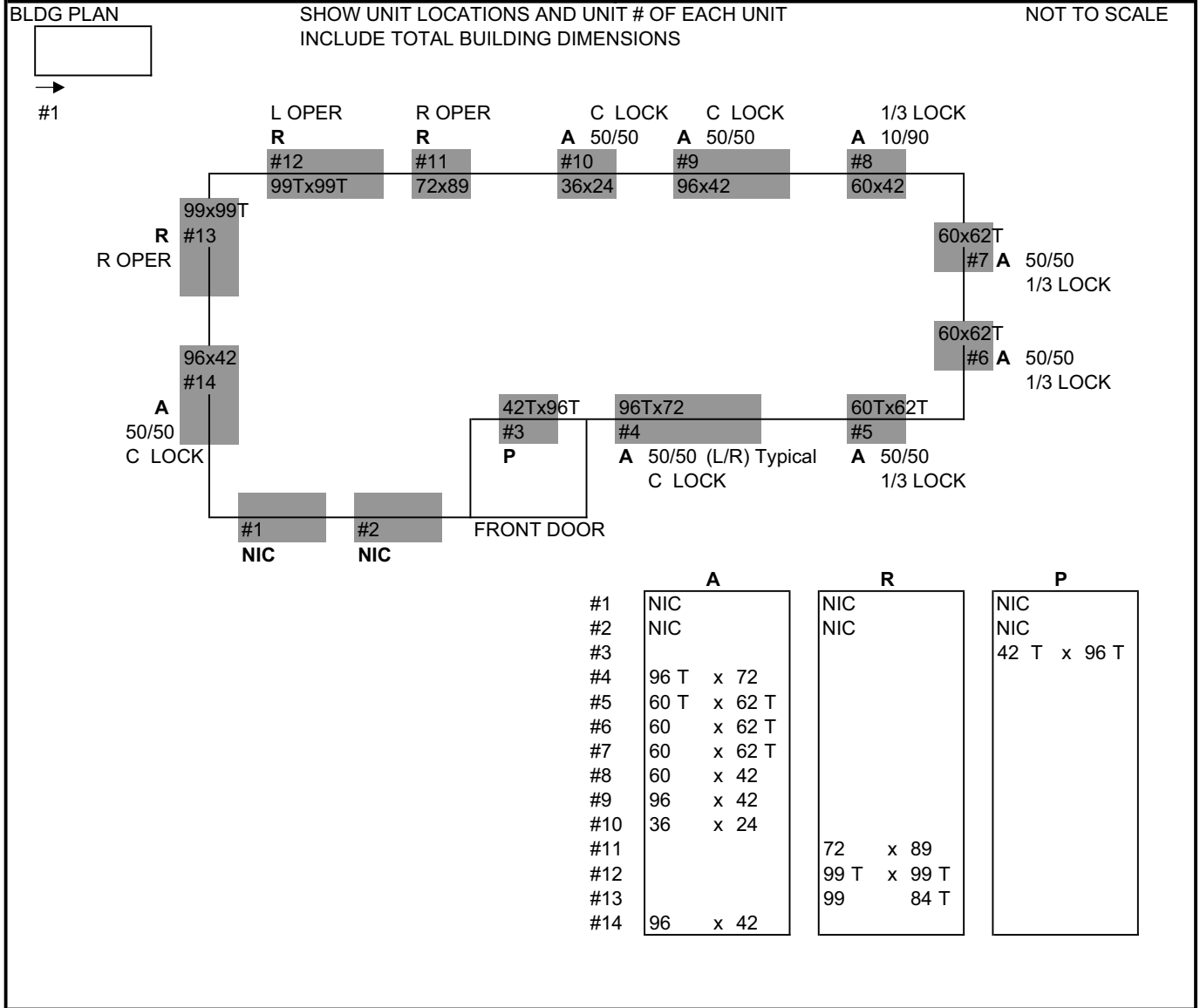


BACK SIDE (SOUTH)

## PROJECT LAYOUT WORKSHEET

INCLUDE ALL UNITS NOT COVERED

DATE 1/1/2009	
NAME Mrs. Jones	PHONE
STREET 123 Maple Way	FOOTINGS REQUIRED SPECIFY UNIT # & LENGTH
CITY American City STATE ZIP	VERTICAL REQUIREMENTS single story



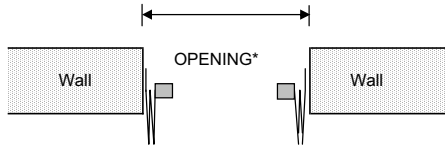
BUILDING CODE: 2007 FLORIDA BUILDING CODE  HVHZ  NHVHZ  ATTACH PROJECT ORDER WORKSHEET

Top of Openings above grade all less than: 9 ft.    Mean Roof Height 12 ft.    Roof Slope 15 Degree

Building Width 80 ft.    Building Depth 30 ft.    Prepared By: \_\_\_\_\_

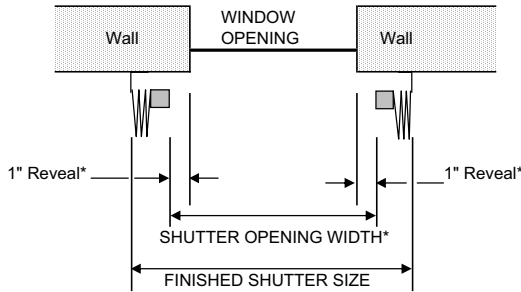
## Accordion Measuring Sheet

"TRAPPED" USE FINISHED DIMENSIONS



\* USE OPENING WIDTH & HEIGHT (FINISHED DIMENSIONS) TO DETERMINE SQUARE FEET.

### MEASURING WIDTH FOR TRAPPED UNIT (INSIDE MOUNT)



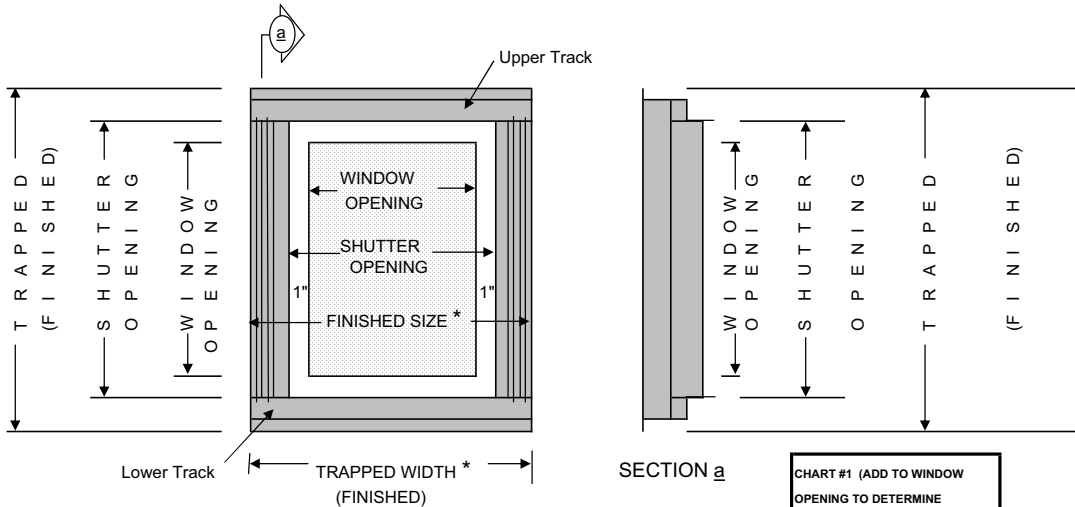
\* ADD 2" TO WINDOW OPENING FOR SHUTTER OPENING WIDTH. USE SF TOOL TO DETERMINE FINISHED SQUARE FEET SEE NOTE # 6 & # 7

Options	Fraction**	Decimal**
cf	3 9/16	3.5625
cc	2 15/16	2.9325
cw	4 1/16	4.0625
cw2	4 3/4	4.75
ww	5 3/16	5.1875
ww2	5 15/16	5.9375
w2w	5 15/16	5.9375
w2w2	6 3/4	6.6875
wf	4 3/4	4.6875
w2f	5 7/16	5.4375
wc	4 1/16	4.0625
w2c	4 7/8	4.8125

Options Key	
CEILING	FLOOR
CEILING	CEILING
CEILING	WALL
CEILING	WALL 2"
WALL	WALL
WALL	WALL 2"
WALL 2"	WALL
WALL 2"	WALL 2"
WALL	FLOOR
WALL 2"	FLOOR
WALL	CEILING
WALL 2"	CEILING

\*\* ADD DIMENSIONS IN OPTIONS CHART TO SHUTTER OPENING HEIGHT TO DETERMINE FINISHED HEIGHT, OR DEDUCT DIMENSIONS FROM TRAPPED SIZE TO DETERMINE SHUTTER OPENING HEIGHT

### MEASURING SHUTTER OPENING WIDTH FOR SURFACE MOUNTED UNIT (FLUSH MOUNT)



### TRAPPED OR FLUSH MOUNT INSTALLATIONS

#### NOTES:

- Always use  $W \times H$  when giving dimensions.
- When trapped always use finished dimensions. Use smallest height dimension for floor conditions.
- Add 2" to window opening width for reveals = SHUTTER OPENING WIDTH
- Add or deduct dimensions referenced in Chart "1" to window opening height = SHUTTER OPENING HEIGHT
- Add dimensions referenced in CHART "2" to window opening height = SHUTTER FINISHED HEIGHT
- Download SF Tool File from [www.rollerstarusa.com](http://www.rollerstarusa.com) to enter shutter opening dimensions to determine finish SF sizes for estimating projects.
- Use Finished Shutter  $W \times H$  or Shutter Opening  $W \times H$  on the order form. Only one of each  $W \times H$  is required.

#### SECTION a

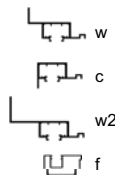


CHART #1 (ADD TO WINDOW OPENING TO DETERMINE SHUTTER OPENING HEIGHT)	
CONC.	STUD
1 1/2	-5/8
SEE NOTE # 2	
1 1/4	-1
SEE NOTE #2	

CHART #2 (ADD TO WINDOW OPENING TO DETERMINE FINISHED SHUTTER HEIGHT)	
CONC.	STUD
4 1/8	2
SEE NOTE # 2	
4 9/16	2 3/8
SEE NOTE # 2	

Note: Add or deduct dimensions shown in these charts for each track, top & bottom to achieve edge distance for the fasteners. Consult Installation Drawings when conditions shown do not apply.